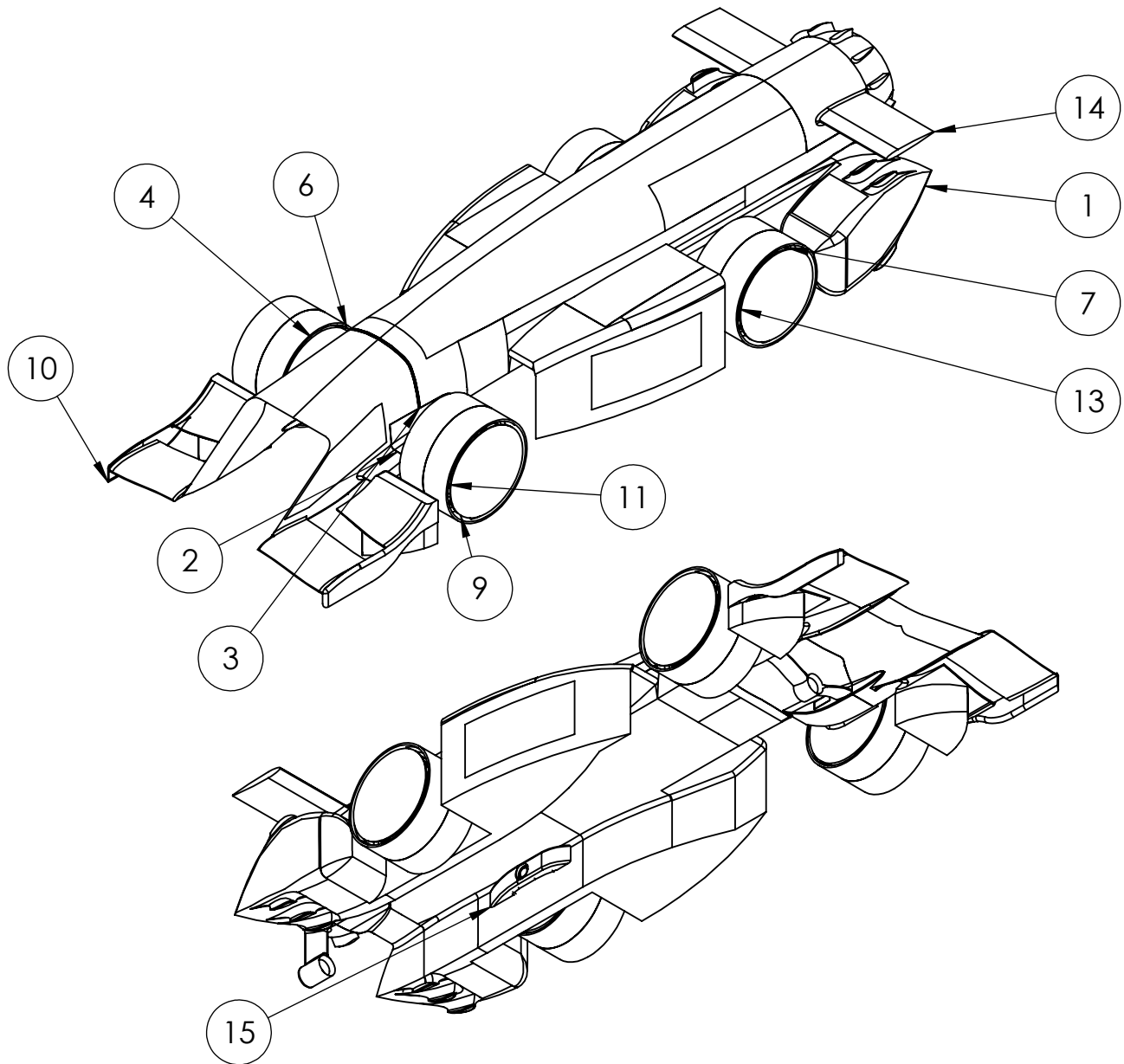
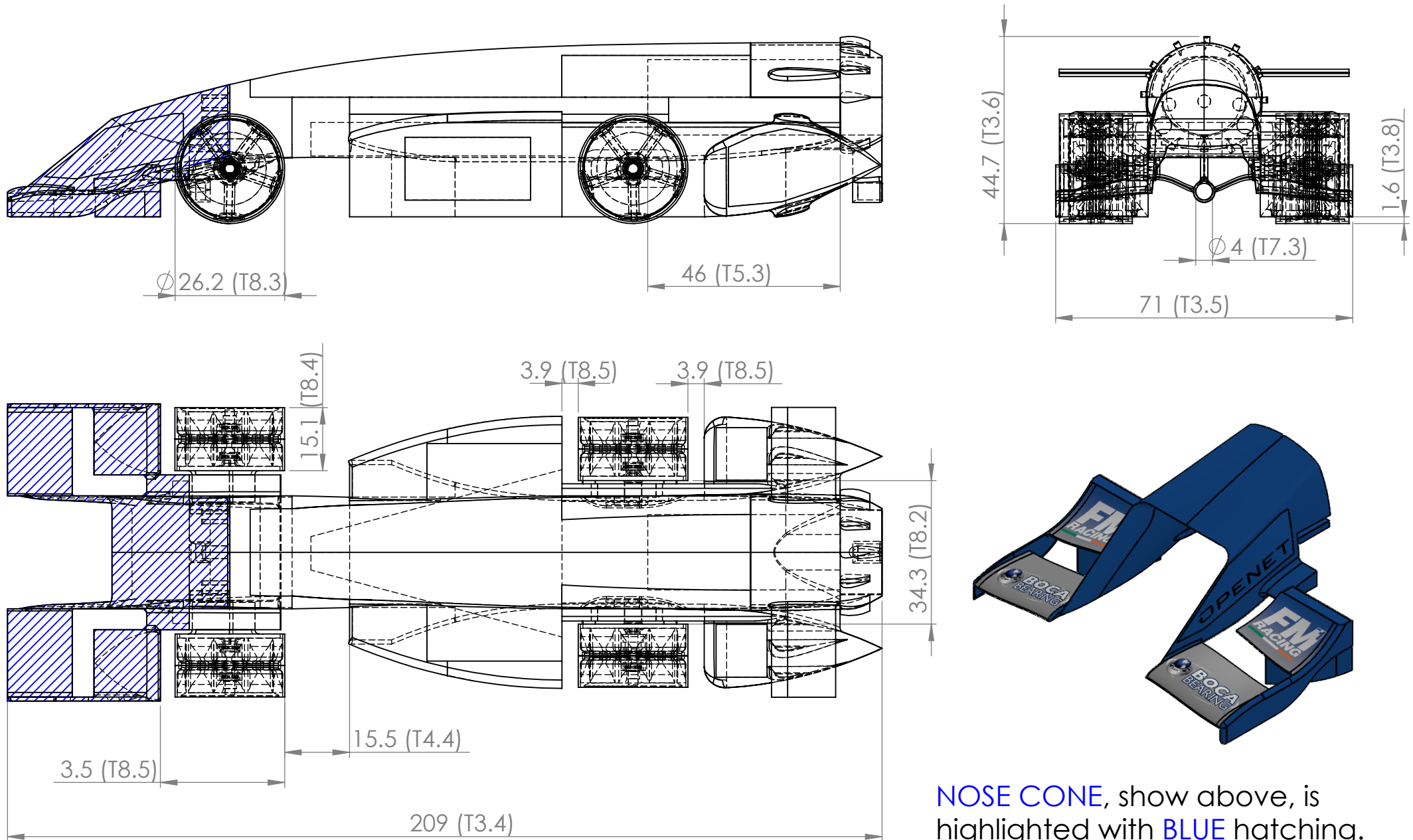


# OVERVIEW OF CAR COMPONENTS AND BILL OF MATERIALS



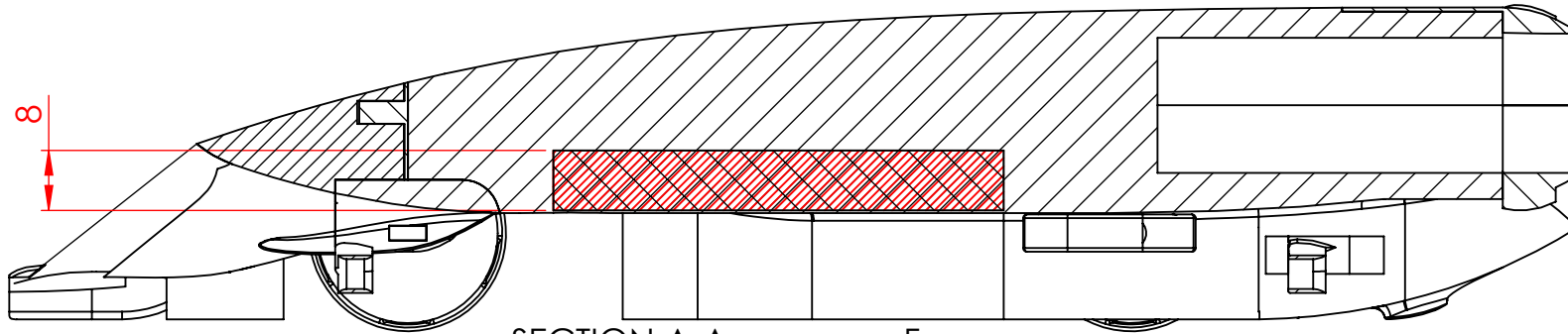
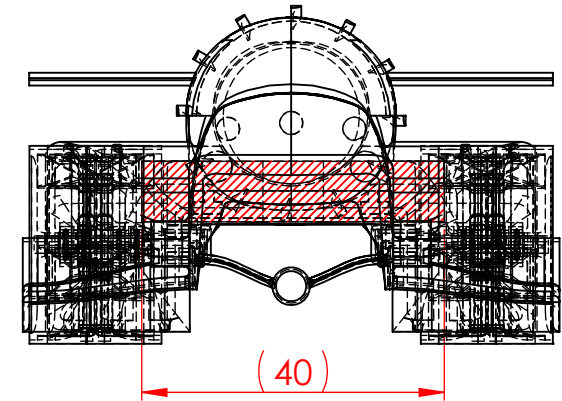
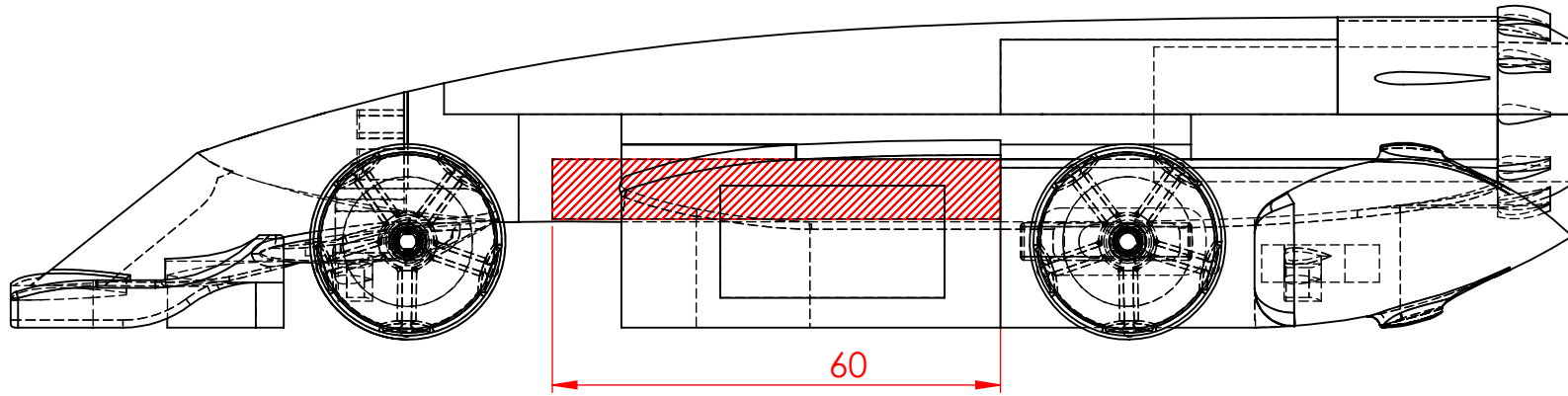
ITEM NO.	PART NUMBER	DESCRIPTION	QTY.
1	CAR BODY	F1 MODEL BLOCK	1
2	BOGIE	STRENGTHENED POLYLACTIC ACID (PLA+)	1
3	NOSE CONE PART 1	STRENGTHENED POLYLACTIC ACID (PLA+)	1
4	RIGHT FRONT AXEL	POLY-METHYL METHACRYLATE (PMMA)	1
5	REAR WHEEL MOUNT	STRENGTHENED POLYLACTIC ACID	2
6	FRONT WHEEL	STRENGTHENED POLYLACTIC ACID	2
7	REAR WHEEL	STRENGTHENED POLYLACTIC ACID	2
8	BEARING	ZIRCONIUM DIOXIDE	8
9	PLATE	POLY-METHYL METHACRYLATE (PMMA)	4
10	NOSE CONE PART 2	STRENGTHENED POLYLACTIC ACID	1
11	FRONT LEFT AXEL	POLY-METHYL METHACRYLATE (PMMA)	1
13	REAR AXEL	POLY-METHYL METHACRYLATE (PMMA)	2
14	REAR WING MODULE	STRENGTHENED POLYLACTIC ACID	1
15	REAR MOUNT FAIRING	STRENGTHENED POLYLACTIC ACID	2

# OVERVIEW OF CAR DIMENSIONS AND TECHNICAL REGULATION COMPLIANCE, AND IDENTIFICATION OF NOSE CONE (T9)



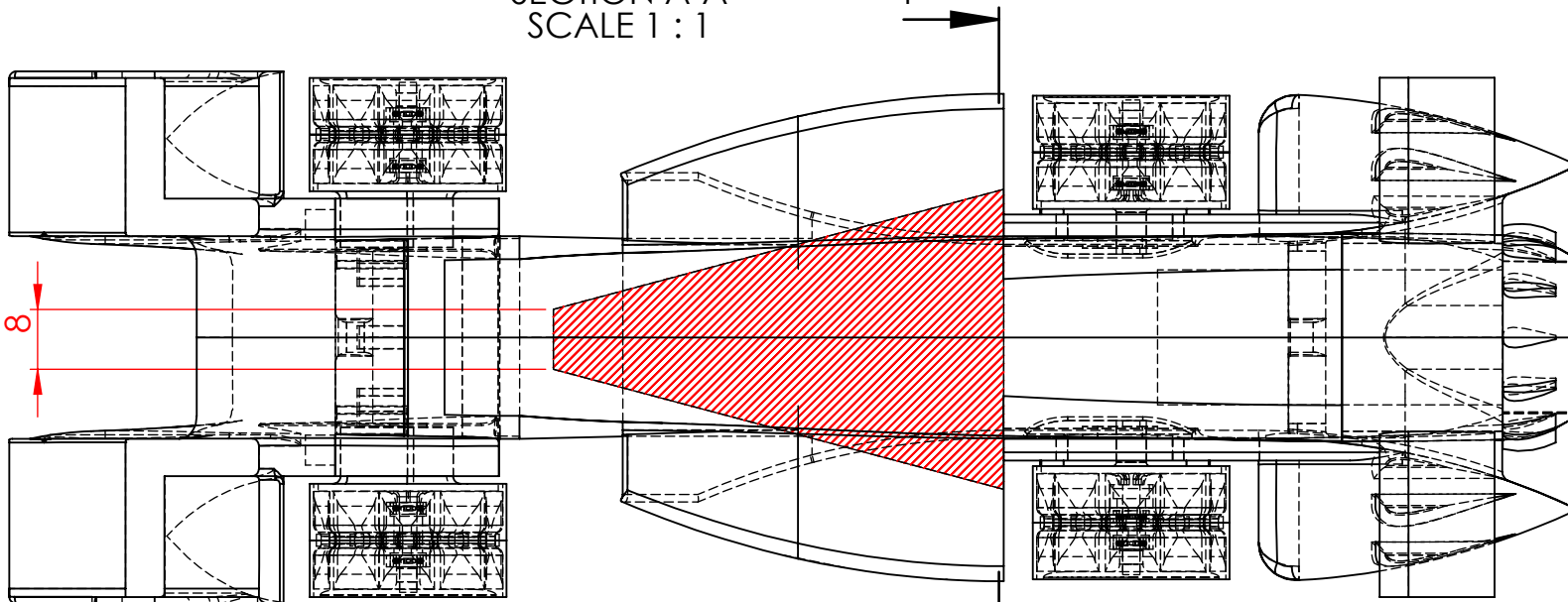
NOSE CONE, show above, is highlighted with BLUE hatching.

# IDENTIFICATION OF VIRTUAL CARGO (COMPLIANCE TO CRITICAL REGULATION T4.2)

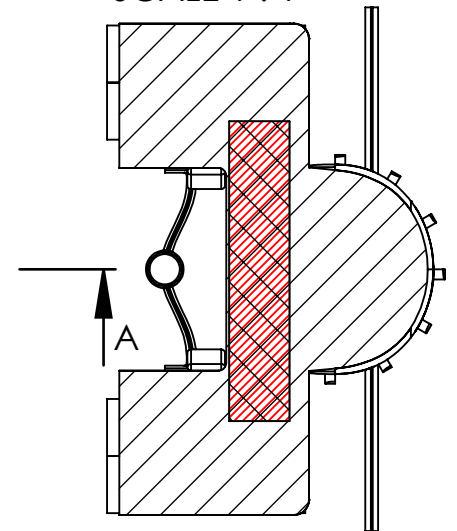


SECTION A-A  
SCALE 1 : 1

F →

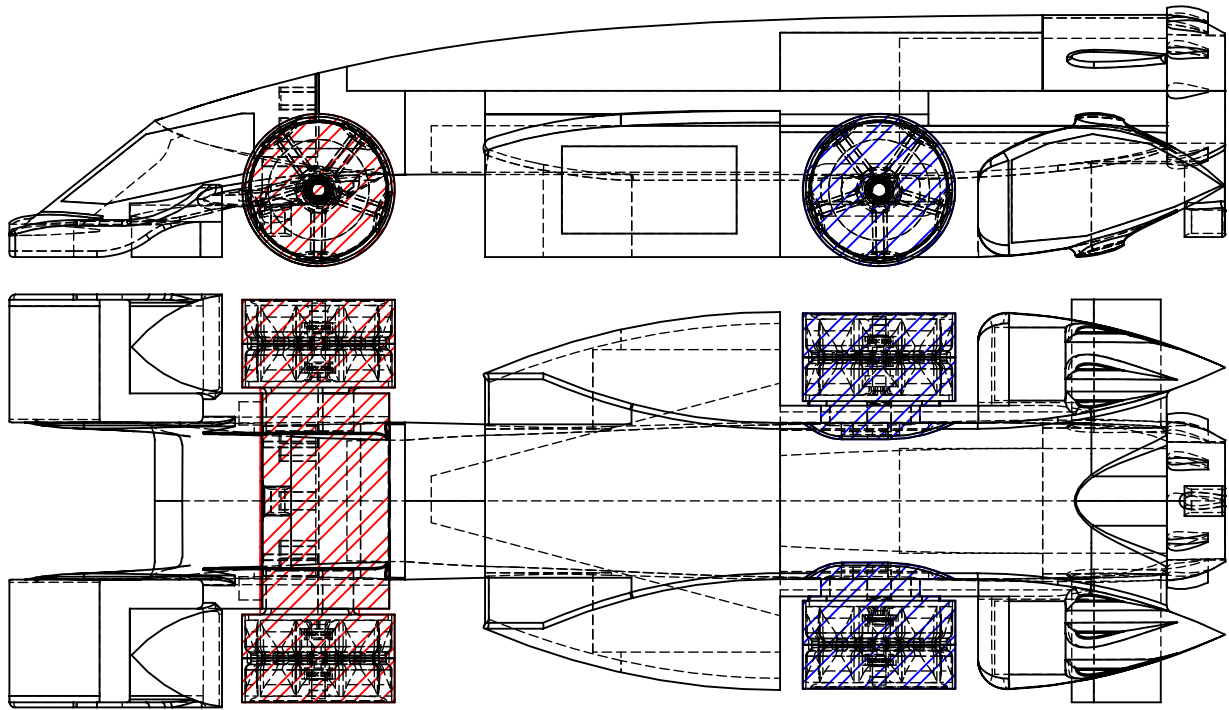


SECTION F-F  
SCALE 1 : 1

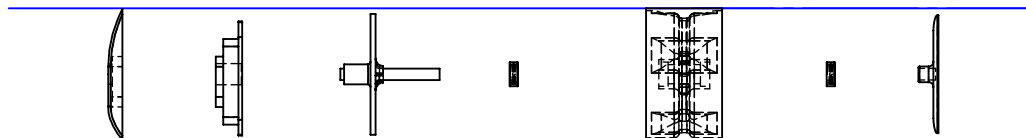
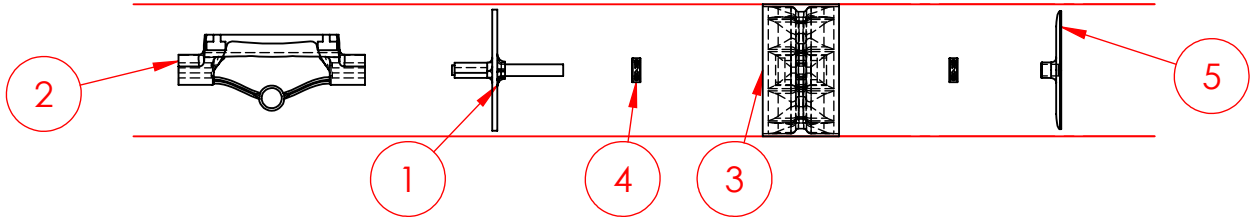


Virtual Cargo, encompassed by the car body, and all relevant dimensions shown in the constraints of the **RED** hatching

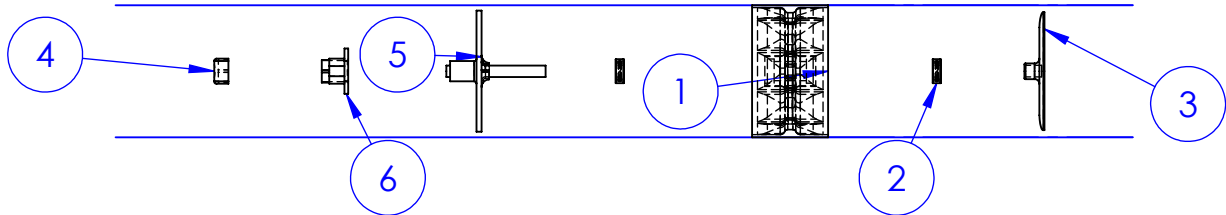
# IDENTIFICATION OF WHEEL AND WHEEL SUPPORT STRUCTURES (COMPLIANCE TO SUBSECTION T8.9.2)



Components remain within cylindrical wheel volume (T8.9)



Components remain within cylindrical wheel volume (T8.9)

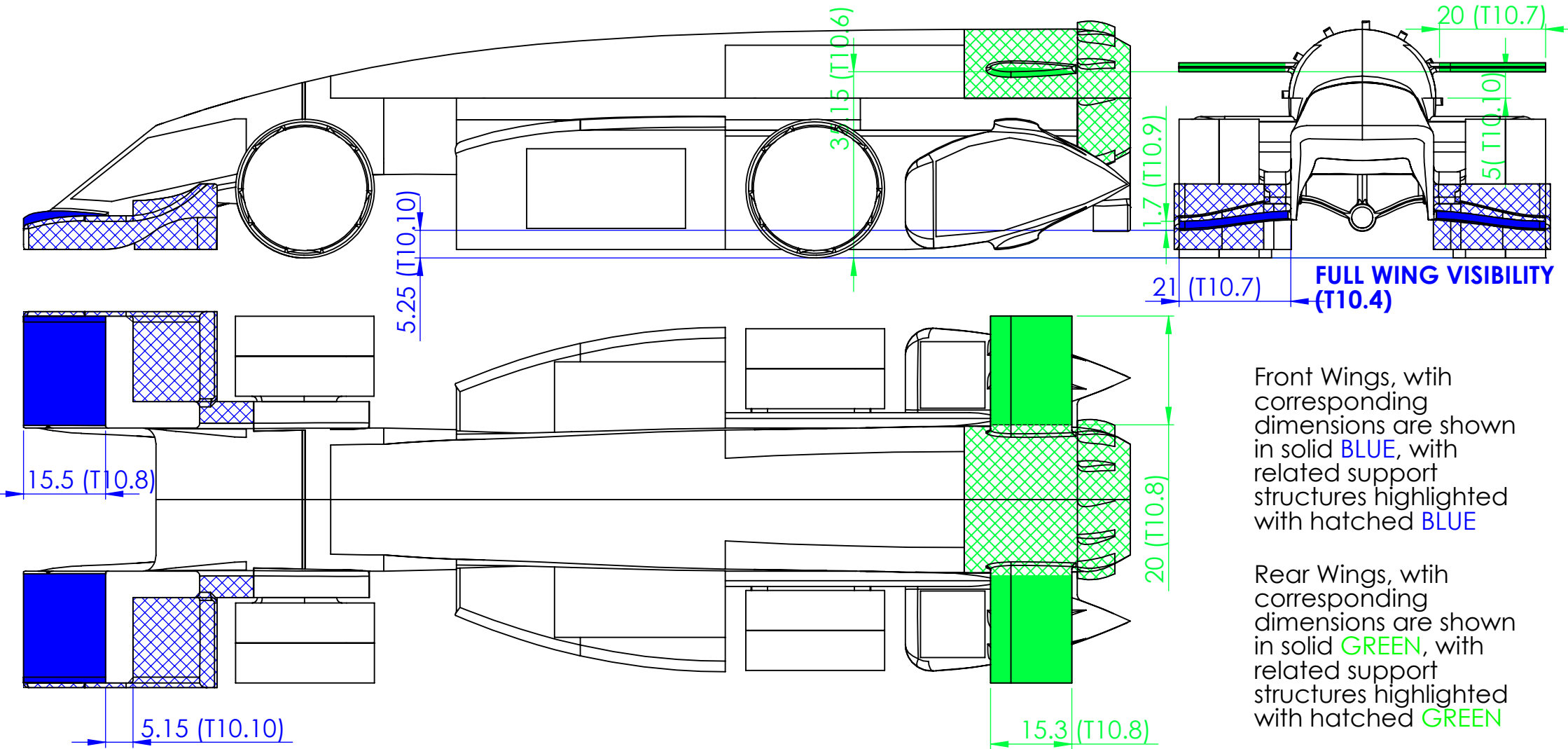


Items related to **front wheel** structures shown in **RED**  
Items related to **rear wheel** structures shown in **BLUE**

ITEM NO.	PART	MATERIAL	QTY.
1	axel	PMMA	1
2	bogie	PLA+	1
3	wheel	PLA+	1
4	bearing	ZrO2	2
5	plate	PMMA	1

ITEM NO.	PART	MATERIAL	QTY.
1	wheel	PLA+	1
2	bearing	ZrO2	2
3	plate	PMMA	1
4	fairing	PLA+	1
5	rear axel	PMMA	1
6	slot insert	PLA+	1

# IDENTIFICATION OF FRONT AND REAR WINGS, AND SUPPORT STRUCTURES (COMPLIANCE TO ALL SUBSECTIONS OF ARTICLE T10)



Front Wings, with corresponding dimensions are shown in solid **BLUE**, with related support structures highlighted with hatched **BLUE**

Rear Wings, with corresponding dimensions are shown in solid **GREEN**, with related support structures highlighted with hatched **GREEN**

The **rear wing** surfaces extrude from the support structure as shown in the above projections, however, only 20mm section furthest from the car centre is defined as the wing surface. The remaining geometry, despite being identical in size and shape, is support structure as indicated by hatching. This is in compliance with 5mm clear airflow, (Regulation T10.10)